

Günther, Horst						
189	E	1.0	Z 227	5.1.14	96,5	hv So-E
Kellermann, Thorsten						
190	E	0.1	Z 379	4.1.7	97,5	v KV-Teller
Günther, Horst						
191	E	1.0	Z 227	2.1.8	96,5	hv Futter-E
Löhl, Frank						
192	E	0.1	Z 62	3.1.9	95,5	sg II
193	E	0.1	Z 62	3.1.8	n. B.	
Kellermann, Thorsten						
194	E	0.1	Z 379	3.1.2	96,5	hv So-E
Günther, Horst						
195	E	0.1	Z 227	5.1.16	96,0	sg I
Löhl, Frank						
196	E	0.1	Z 62	3.1.11	94,5	sg
Kellermann, Thorsten						
197	E	0.1	Z 379	3.1.4	97,0	v LVE
198	E	0.1	Z 379	5.1.5	96,5	hv So-E

Kleinsilber gelb

Sippel, Michael						
199	E	1.0	Z 237	1.1.1	95,0	sg
200	E	1.0	Z 237	5.1.17	95,5	sg II
201	E	0.1	Z 237	5.1.18	95,0	sg
202	E	0.1	Z 237	3.1.14	94,0	sg

Kleinsilber hell

Kellermann, Thorsten						
203	E	1.0	Z 379	3.1.1	96,5	hv So-E
204	E	1.0	Z 379	4.1.5	96,5	hv I
205	E	0.1	Z 379	3.1.2	96,0	sg II
206	E	0.1	Z 379	3.1.3	96,5	hv I
207	E	0.1	Z 379	3.1.4	96,0	sg I

Holländer schwarz-weiß



Imhof, Karl-Heinz						
208	E	0.1	Z 207	3.1.1	n. B.	
209	E	0.1	Z 207	1.1.5	95,0	sg
210	E	0.1	Z 207	1.1.7	95,0	sg
211	E	0.1	Z 207	1.1.9	n. B.	
212	E	0.1	Z 207	2.1.14	95,0	sg

Lohkaninchen schwarz



Remmele, Roland

213	E	1.0	Z 354	2.1.4	97,0	v KVE
214	E	1.0	Z 354	2.1.3	95,5	sg II
215	E	0.1	Z 354	2.1.7	96,0	sg II
216	E	0.1	Z 354	2.1.8	96,5	hv So-E
217	E	0.1	Z 354	2.1.2	97,0	v KVE
218	E	0.1	Z 354	2.1.5	97,0	v LV JubB

Schwarz-Rexe



|| Remmele, Roland ||

278	E	1.0	Z 354	3.1.5	96,5	hv E
279	E	1.0	Z 354	3.1.3	97,0	v LRE
280	E	0.1	Z 354	3.1.6	n. B.	
281	E	0.1	Z 354	3.1.8	97,0	v KVE
282	E	0.1	Z 354	3.1.2	97,0	v KVE
283	E	0.1	Z 354	3.1.7	97,5	v KV-Teller

Zwerg-Rexe schwarz



Zwiefelhofer, Tobias

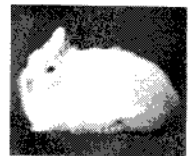
284	E	0.1	Z 62	3.1.2	96,0	sg II
285	E	1.0	Z 62	3.1.1	96,0	sg I
286	E	0.1	Z 62	4.1.9	94,0	sg
287	E	1.0	Z 62	4.1.7	96,0	sg I
288	E	0.1	Z 62	3.1.6	leer	

Genter Bartkaninchen wildfarben

Zwiefelhofer, Tobias

289	E	1.0	Z 62	3.1.30	96,5	hv E
290	E	0.1	Z 62	3.1.33	95,0	sg
291	E	0.1	Z 62	2.1.20	96,0	sg II
292	E	0.1	Z 62	3.1.27	95,5	sg II
293	E	0.1	Z 62	3.1.32	96,0	sg I

Zwergfuchskaninchen schwarz



Groß, ZG Kurt & Jasmin

294	E	1.0	Z 62	2.1.2	94,5	sg
295	E	1.0	Z 62	3.1.5	93,5	g
296	E	1.0	Z 62	3.1.6	95,0	sg
297	E	0.1	Z 62	3.1.4	95,5	sg II

Jugendschau

Rhönkaninchen



Schweiker, Mika

298	E	1.0	ZJ 379	4.1.1	n. B.	
299	E	1.0	ZJ 379	4.1.2	96,0	sg I
300	E	0.1	ZJ 379	4.1.3	94,0	sg
301	E	0.1	ZJ 379	4.1.4	leer	